

# Yearly Progress Report

## CARING FOR OUR COUNTRY PROJECT REPORT

Progress Report for the period *8 October 2009 to 30 June 2010*

Project ID:	<b>BP01050</b>
Grantee Name	<b>Private Forestry Southern Queensland</b>
Project Name	<b>Re-vegnet.au</b>
Project completion date	<b>June 30 2013</b>
Project final report due date	<b>September 1 2013</b>
Contact person for more information	<b>Sean Ryan</b>
Report authorised by:	<b>Sean Ryan – Executive Officer</b>

### 1. Report on MERI Implementation

#### 1. Overview of Project Progress

The project is progressing well considering the start date, the complexity of the project and the involvement of partner organisations. All target milestones have either been exceeded, have been met, or are within an acceptable timeline to be completed considering the limiting factors. There have been some adjustments to specific activities due to the substantial reduction from the original application. For example the construction of the GIS based A-D Rapid Assessment system; this is a very significant tool for the project and has taken a considerable amount of time to develop in addition to the training required for its competent use by partner and associated organisations. However this has been achieved within the overall budget protocols of the project with minimal target allocation changes.

Responses to a number of example Key Evaluation Questions outlined in the plan provides demonstrated evidence of this; namely:

*Did the progressive system of assessment, prioritisation, capacity building, management plans and associated on-ground work influence the targeted land managers?*

105 Landholder Survey responses, 474 landholders at field days and workshops, 46 PMP's completed to date, 31 receive incentives for on ground works.

*Has the incentive scheme provided the trigger for on-ground works?*

The project has completed 3 889 ha of on ground works to improve forest health, improve ground cover and link essential habitats particularly in the highly erodible sodic soil landscapes. The incentives have resulted in a \$1 C4C: \$4 Landholder dollar contribution.

*To what extent has the project improved the ecological condition of the project area?*

The project has 87 000 ha under improved fire management regimes and within the 3 889 ha of on-ground works undertaken to date, ground cover has already improved from 25% to 50% and is continuing to improve.

The logical progression from landholder skills assessment and at risk mapping → to prioritisation → to capacity building → to Property Management and on-ground works Plans → to incentive payments to trigger works is working well and will continue to be the key element of the project program logic.

The monitoring and evaluation process has been undertaken as described within the Meri plan, workshop attendees and indeed all landholders who are interested in participating the Re-Vegnet.au are surveyed to ascertain their current knowledgebase and how they consider is the best way to improve their capacity to manage their forests. Workshop participants are surveyed before and after to ascertain their response to the workshops and if they considered their skills were significantly improved, to which there has been a very positive response as has the questions on workshop contents and delivery.

There has been a time lag in bringing some of the partner organisations up to speed on the extension and forest assessment program which has resulted in PFSQ supporting them to a greater degree than expected but this has filled the gap and is expected to be much improved in year 2.

### **Summary of Project Progress**

1. Formation and inaugural meeting of the steering committee combined with a 2 day training workshop on communicating the MERI plan and program logic requirements, monitoring processes as well as the project work plan formulation and implementation for all participating organisations. This has been followed by 3 subsequent meetings reviewing milestone progress against time lines, developing project issues, budget constraints and reporting requirements.
2. Development and promotion of Landholder Survey seeking information from interested landholder's area of remnant, regrowth forest or plantation within their holding, current land and soil management practices, current understanding of Best Practice processors and their preferred system to increase their understanding and participation in forest management.
3. Completion of 14 field days and workshops attended by 474 participants on remnant and regrowth forest management, fire management and revegetation processes to improve environmental and habitat outcomes
4. Partnership formulated with the Silver Lining Foundation indigenous group to bring their new nursery up to industry standard and to ensure a cost effective successful 200 000 native seedling per year capability. Train 14 participants to effectively perform NRM work on an ongoing contractual basis, for Re-Vegnet.au projects, Ergon Energy and Tarong Power Station revegetation Projects.
5. A-D 'Rapid Assessment' GIS based forest health rapid assessment tool developed and working. The tool has been constructed in Arcmap and automatically locates the assessment point via GPS onto the aerial imagery mapping. The assessment process works through a field of 20 forest function criteria against a score of 3-5 drop downs. Each of the criteria has a weighting based on the importance of the function and at the completion of the individual criteria assessment the program automatically scores the forest health of the forest as an A,B,C or D and marks it with the associated coloured dot on the aerial imagery of the regional mapping. A - White, B - Yellow, C - Blue, D - Red. The results over the life of the project will be a matrix of coloured dots indicating the regional health and productivity rating of our forest cover and the areas of highest to lowest priority for rehabilitation work for the project area.
6. 46 Property Management Plans completed with 31 properties completing 3516 ha of on-ground works to date. The project is now posed to steadily increase this in line with project outcomes

7. Training and support program in place to achieve an economically sustainable 200 000 native seedling nursery and 2 NRM gangs for the Silver Lining Foundation. This process has also been assisted with funds leveraged from the Indigenous Land Corporation.

## **2. Lessons learned**

From the pre and post workshop evaluations on fire management it was clear that participants had a low understanding of fire dynamics and fuel reduction methodology that improved greatly at the completion of the workshop; however most stated that though they understood it, they were still not confident of implementing it in the field. 100% of participants were keen to do follow up workshops to formulate individual and cluster fire management plans and undertake training in its implementation.

When formulating a time line for project progression there is always a tendency to expect the lead in time from approval to making real progress to be shorter than it can be achieved in, particularly when dealing with partners who have recruitment and other issues to complete before moving forward. However the advantage of a four year project is that it should only be a 'one-off' and once 'catch-up' has been achieved then progress should proceed on schedule.

Generally the Meri Plan has been in line with project development and outcomes and no major changes have been considered to date.

2. Progress and achievements against Caring for our Country Targets and approved milestones / outputs / activities / 2009-2010

1 Caring for our Country targets	2 Approved objectives / objects (include units of measure)	3 Actual quantity achieved (current reporting period)	4 Actual cumulative quantity achieved (to date )	5 Cumulative quantity to have been achieved from funding deed (to date)	6 Scheduled milestones/outputs/activities (current reporting period or carried over from the previous reporting period)	7 Percentage of scheduled milestone / output / activity achieved (current reporting period)	8 Activity Reporting	9 Spatial information available for location of on ground works
	<p>Annual Works Plan 2009-10</p> <p>1. MERI plan submitted and approved</p> <p>2. Partnership arrangements formalised with six natural resource management (nrm) bodies including Central Qld Forestry Association</p>	<p>MERI plan submitted and approved</p> <p>SEQ Catchments Fitzroy Basin Catchment Central Qld Forestry Association Dry Burdekin Catchment Terrain NRM Group Burnett Mary Regional Group</p>	<p>MERI plan submitted and approved</p> <p>Partnerships between PFSQ and 6 NRM groups CQFA and Silverlining Foundation</p>	<p>Meri Plan reviewed at 3 subsequent Steering Committee meetings</p> <p>Partnership arrangements formalised with six natural resource management (nrm) bodies and Silver Lining Foundation Four Steering Committee meetings</p>	<p><b>Working group Regions:</b></p> <p>Seq Catchments – NRM area</p> <p>PFSQ – BMRG area + over all supervision and assistance</p> <p>CQFA – Fitzroy basin and Reef Catchments</p> <p>Terrain – Terrain and Dry tropics region</p>	<p>100%</p>	<p>2 day training workshop on communicating the MERI plan and program logic requirements, monitoring processes as well as the project work plan formulation and implementation for all participating organisations. Plan reviewed at Steering Committee meeting December 09, February 2010, and June 2010.</p>	

1 Caring for our Country targets	2 Approved objectives / objects as per Head Funding Deed Schedule	3 Actual quantity achieved (current reporting period)	4 Actual cumulative quantity achieved	5 Cumulative quantity to have been achieved from funding deed	6 Scheduled milestones/outputs/activities (current reporting period or carried over from the previous reporting period)	7 Percentage of scheduled milestone / output / activity achieved (current reporting period)	8 Activity Reporting  <b>PFSQ SEQC CQFA Terrain</b>	9 Spatial information available for location of on ground works
<p><b>Target 1</b>  <b>Increasing native habitat</b>  <i>To increase by at least 400,000 hectares, over the next two years, the area of native habitat and revegetation that is managed to reduce critical threats to biodiversity and enhance the condition, connectivity and resilience of habitats and landscapes in priority regions</i></p>	<p><b>Increasing native habitat</b>  <i>21 000 hectares area regenerated within six bio-regions naturally through improved grazing practices and reduced instances of inappropriate fire management systems to increase native habitat</i></p>	<p><b>373 ha revegetation linking 8 802ha</b>  <b>3516 of regrowth under active management</b></p>	<p>373ha of revegetation linked to 8 802ha of remnant and regrowth vegetation of 3516 regrowth under active management</p> <p>Cumulative total Fire Management Field days 84 447 ha</p> <p>Under Management Plans</p>	<p>On-ground works to increase natural regeneration of 5 250 hectares Area under improved Fire Management 84 447 ha</p>	<p>On-ground works to increase natural regeneration of 5 250 hectares</p>	<p>74%</p> <p>1680%</p>	<p>Development and construction of Survey Monkey parameters for identifying Landholders with criteria to assess funding for the program</p> <p>Participating properties resulting from initial Fire Management field days, survey participation, network connections etc</p> <p>Fire Management to improve regeneration and regrowth management has been undertaken using three systems to achieve the stated outcomes, namely .</p> <ol style="list-style-type: none"> <li>1. Fire management Field days addressing district clusters at <ol style="list-style-type: none"> <li>a. Captains creek – 35 participants – 8 729 ha</li> <li>b. Mt Kilcoy – 47 participants, 32 properties 73 865ha covered by the management plan + adjoining national park</li> <li>c. Santa Glen (Rockhampton) – 22 participants – <b>2 853ha</b></li> </ol> </li> <li>2. 5 day workshops have .75 of a day dedicated to fire management and GLM x 24 participants</li> <li>3. 46 property management plans have a dedicated fire management section</li> </ol> <p><b>Revegetation linking essential habitat</b></p> <p>SEQ – 20ha linking 170</p> <p>PFSQ – 20 ha linking 380</p> <p>CQ - 160 hectares linking 1630 hectares</p> <p>NQ - 2,444 ha of vegetation is now being managed explicitly to enhance critical ecosystem service values through registration with the Degree Celsius initiative</p> <p>Within this, a total of 1,014 ha of vegetation is included on properties for which 22 comprehensive Property Management Plan's (PMP) have been developed and are now being implemented. This total consists of 113.7 ha of re-vegetation/forestry, 216.6 ha of re-growth and 683.91 hectares of remnant forest.</p> <p>Native habitat connectivity enhanced exceeds the milestone of 820 ha - one 65ha property is generating the one continuous link between the 1,740 ha Herberton Range Forest Reserve and the largest area of continuous rainforest on freehold title in the wet tropics, an area in excess of 750ha.</p> <p>Re-vegetation works have been targeted at re-establishment of corridors/linkages with a particular focus on re-establishment of MABI forest in the Wet Tropics.</p>	<p><b>Available for all works, PMPs, workshops etc</b></p>

Activity One targets have been achieved via promotion of the program through the media, seminars, field days and [www.Re-vegnet.au](http://www.Re-vegnet.au), a site specific Web page. This progressed through to 105 landholders completing our on line survey (see target 5). These landholders who are keen to participate in the project have a total 59 068 ha of Remnant forest, 15 359 ha Regrowth, 8 830ha of revegetation and a further 210 ha of plantation.

Across the project area to date Terrain has completed 22 Property Management Plans and contracted 1014ha to be retained and managed under covenants, CQFA has 7 completed and 12 PMPs under construction and has contracted 1750 ha of regrowth management. 400 ha has been completed to date with the remainder to be completed by September, PFSQ has completed 13 PMPs and contracted for and completed 900 ha of regrowth management and SEQ Catchments has 188 ha of on-ground works completed and a further 687 ha of on-ground works committed under contract and due for completion by October 2010. The uncompleted works have been delayed due to the late project start date.

These landholders have contracted to thin their forests under the 'Forest Code of Practice' using Best Management Practice gained through attendance at Field Days and Workshops and personal interaction with Project staff, to gain a greater biodiversity uplift, increase in ground cover, forest regrowth management and native habitat improvement through the management and retention of natural regeneration. **Schedule 1** lists all properties throughout the regions contracted to perform works and receive incentives towards those works.

The Fire Management Day presented at Captain Creek was very well received by the 35 participants who together own 8729ha. The area had just been through a major fire, so the landholder interest was palpable. As a result of the day, there has been agreement among the landholders to form local clusters with each cluster drawing up a management plan cooperating with firebreaks, fuel reduction burns, and general fire management. This will be an ongoing progression with 2 more workshops to be completed for 'hands on' implementation stage.

Kilcoy Fire Management Open Day launching their District Fire Plan – 47 participants from 32 properties with a total of 73,865ha covered by the Fire Management Plan. PFSQ's participation involved training in aligning fire control with the outcomes designated in their property management plans and included calculations of the drought Index, fire danger ratings and predicting fire intensity, flame height and behaviour, ignition pattern and techniques, firebreak locations and systems, achieving mosaics and timing for when to burn and not to burn.

Santa Glen (Rockhampton area) Fire Management Workshop for the local community with 22 attendees.

5 day workshop x 24 participants - .75 day dedicated to Fire management

PFSQ region									
Landholder name	PMP Completed	Remnant (ha)	Reveg/ forestry plant area (ha)	Regrowth (ha)	Total Property (ha)	Total works area (ha)	Total \$ Allocated		
Confidential	✓				7476	100	8250		
Confidential	✓	1800				85	7012.5		
Confidential	✓	1000		1000	4800	100	8250		
Confidential	✓	5669		3343	9012	210	17325		
Confidential	✓	1000			1000	40	3000		
Confidential	✓	1080			1080	100	8250		
Confidential	✓	40		100	140	50	4125		
Confidential	✓	600			807	80	6600		
Confidential	✓	2000		2000	4000	110	9075		
Confidential	✓		13						
Confidential	✓		12				0		
Confidential	✓		4				0		
Confidential	✓		8				0		

SEQ Catchment region				
NAME	PMP	Property Area	Area completed	Area committed
Confidential	y	577	95	95
Confidential	y	165	30	69
Confidential	y	103	70	70
Confidential	y	180	23	23
Confidential	y	257		123
Confidential	n	1050		400
Confidential	n	46		8
Confidential	n	310		60
Confidential	n	70		20
Confidential	n	64		

Terrain and Burdekin Dry Tropics region

Property	Landholder name	PMP Completed	Property size (ha)	Reveg/ forestry plant area (ha)	Code of Practice area (ha)	Regrowth (ha)	Total works area (ha)	\$ Allocated
1	Confidential	•	37.32	6.2			6.2	5030
2	✓	•	55	10.56			10.56	7800
3	✓	•	125	10.2	113.48		123.68	0
4	✓	•	131.1	9.8			9.8	0
5	✓	•	449.5		105.02	37.1	142.12	3500
6	✓	•	8.28	4.9		2.9	7.8	0
7	✓	•	133.4		5.9	71.1	77	0
8	✓	•	33.6	5.2			5.2	7912
9	✓	•	39.1		7.5	6.9	14.4	0
10	✓	•	6.23	1.5		1.2	2.7	0
11	✓	•	49.6	18			18	6840
12	✓	•	97		49.1	26.9	76	7180
13	✓	•	18.26	3.2		5.7	8.9	2980
14	✓	•	147.1		60		60	4828
15	✓	•	176.2	6.1	113.3	10.8	130.2	5470
16	✓	•	42.8		14	10.2	24.2	6140
17	✓	•	48.7	5.9	23.61	11	40.51	5236
18	✓	•	5.83	4.5			4.5	7420
19	✓	•	79.5	1.7	43.8	4.1	49.6	0
20	✓	•	176.1		116	9.76	125.76	4683
21	✓	•	64.9	14			14	0
22	✓	•	255.8	11.9	32.2	19	63.1	5200
	<b>Totals</b>		<b>2180.32</b>	<b>113.66</b>	<b>683.91</b>	<b>216.66</b>	<b>1014.23</b>	<b>\$80,220</b>

Central Qld Forest Association and Fitzroy Basin

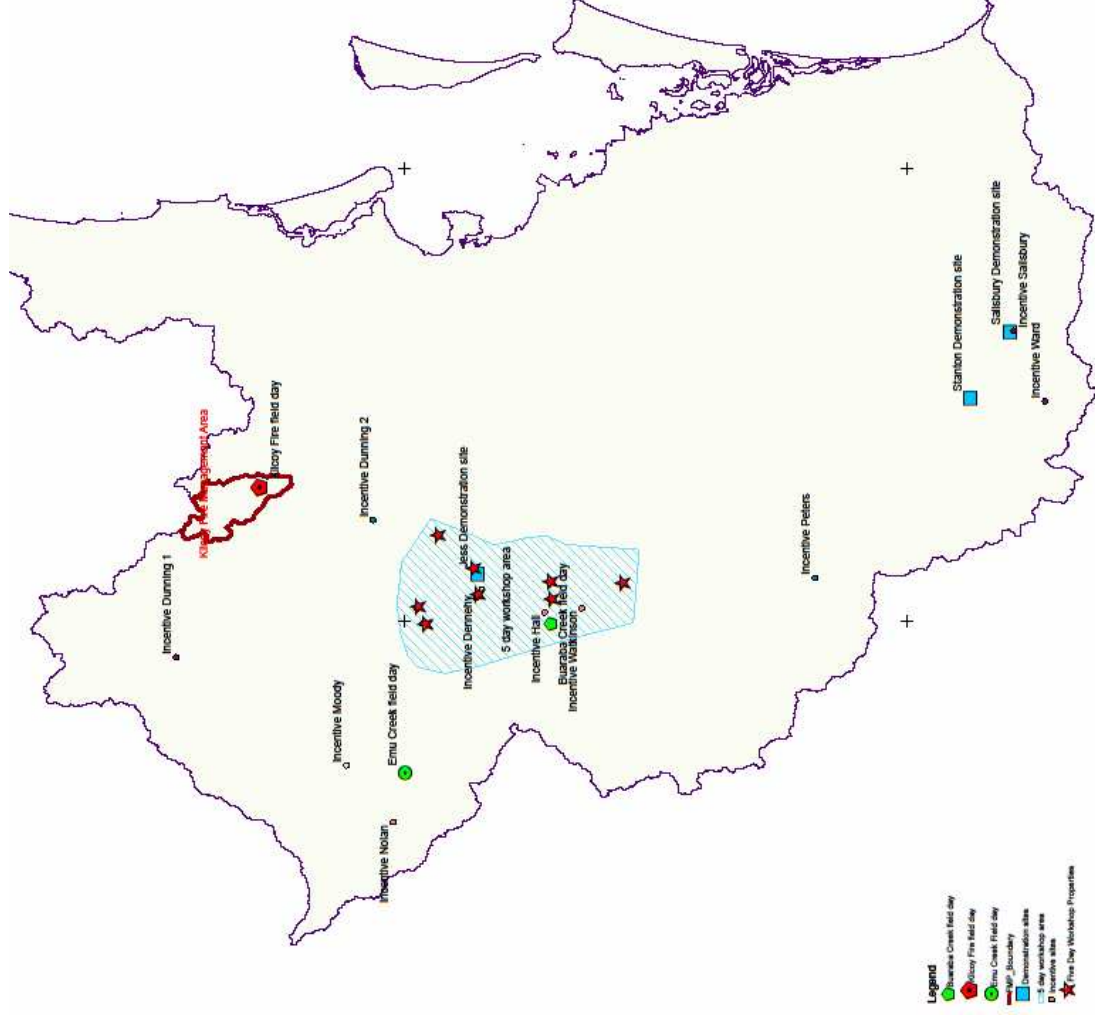
	Property	Landholder name	Property size (ha)	PMP	Forested Area (ha)
1	Confidential	Confidential	1574	✓	405
2	✓	✓	1593	✓	350
3	✓	✓	7538	✓	4439
4	✓	✓	1243	✓	1093
5	✓	✓	9464	✓	2243
6	✓	✓	1908	✓	441
7	✓	✓	354	✓	210
8	✓	✓	2853	✓	780
9	✓	✓	8181	✓	1605
<b>Total</b>			<b>34708</b>		<b>11566</b>



1 Caring for our Country targets	2 Approved objectives / objects as per Head Funding Deed Schedule (include units of measure)	3 Actual quantity achieved (current reporting period)	4 Actual cumulative quantity achieved (to date )	5 Cumulative quantity to have been achieved from funding deed (to date)	6 Scheduled milestones/outputs/activities (current reporting period or carried over from the previous reporting period)	7 Percentage of scheduled milestone / output / activity achieved (current reporting period)	8 Activity Reporting	9 Spatial information available for location of on ground works
<b>Target 3 Protecting the Reef - Pastoralists</b> – To increase the number of pastoralists who have improved ground cover monitoring and management in areas where runoff from grazing is contributing significantly to sediment loads and a decline in the quality of water reaching the reef lagoon by a further 1500 over three years.	84 pastoralists develop and implement property management plans 84 pastoralists receive incentives for on-farm works and revegetation to improve ground cover and change land management practices improve ground cover and reduce sediment loads			<b>Not in first year</b>				

This Activity is to begin in the next financial year but lead in work as outlined in Activity two is in progress.

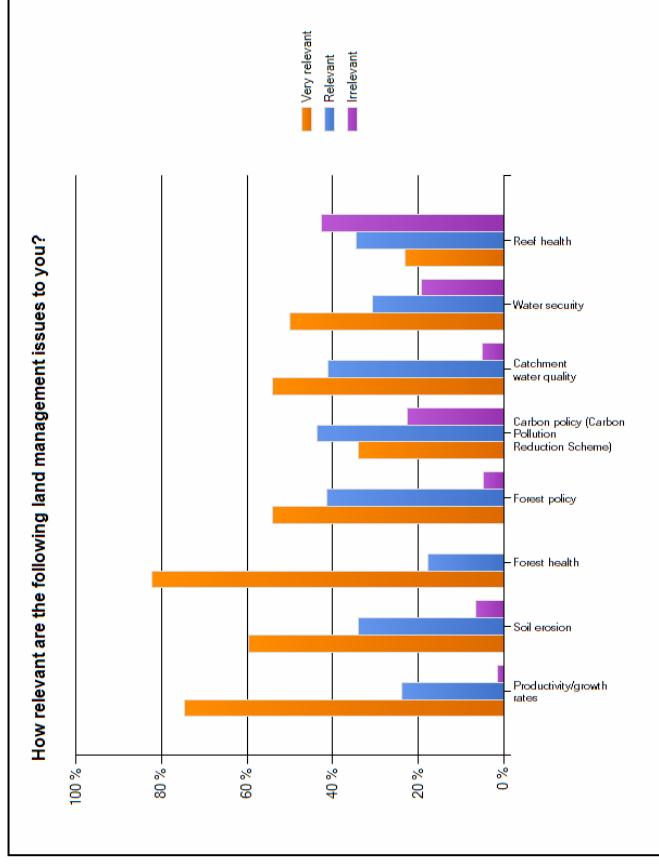
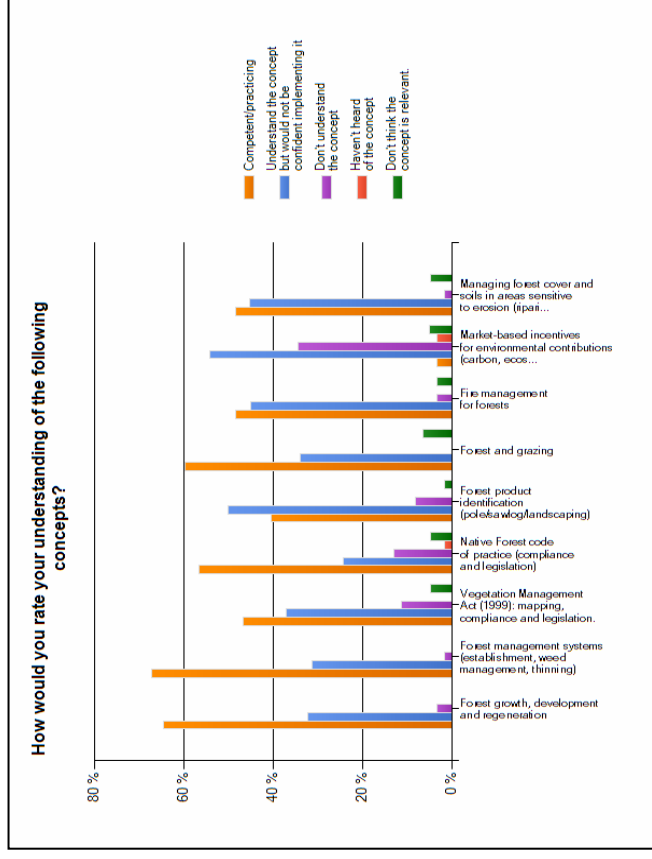
1	2	3	4	5	6	7	8	9
Caring for our Country targets	Approved objectives / objects as per Head Funding Deed Schedule (include units of measure)	Actual quantity achieved	Actual cumulative quantity achieved	Cumulative quantity to have been achieved from funding deed	Scheduled milestones/outputs/activities (current reporting period or carried over from the previous reporting period)	Percentage of scheduled milestone / output / activity achieved (current reporting period)	Activity Reporting	Spatial information available for location of on ground works
<p><b>Target 4</b>  <b>Improving coastal hotspots</b> – To address the threats affecting the environmental values of coastal hotspots over the next two years, such as declining or poor water quality, disturbance of acid sulphate soils or ecosystem disturbance leading to habitat loss and biodiversity decline.</p>	<p>To increase by 33 the number of management plans implemented to address the critical threats to coastal hotspots - Moreton Bay, within SEQ Catchments.</p>	<p>4 plans completed  7 under construction</p>	<p>4 + 7</p>	<p>11 management plans that address the critical threats to coastal hotspots (Moreton Bay)</p>	<p>11 management plans that address the critical threats to coastal hotspots (Moreton Bay)</p>	<p><b>36%</b></p>	<p>Activity 4 is slightly behind target however all lead in work has been completed including 19 survey respondents, 1 introductory forest management field day, 1 regrowth management and legislation field day, 1 fire management specific field day, 1 general forest management, and 1 x 5 day work shop. 4 PMPs have been completed and 7 are in production. 2 landholders have completed 188 ha of on- ground works with three additional landholders completed agreements for further 687 ha to be completed by October.</p>	



**Map 2. Project Investment points within SEQ Catchments for Field days, 5 day workshops, district Fires management plans, Demonstration sites, PMPs and Incentive properties**

1 Caring for our Country targets	2 Approved objectives / objects as per Head Funding Deed Schedule (include units of measure)	3 Actual quantity achieved (current reporting period)	4 Actual cumulative quantity achieved (to date )	5 Cumulative quantity to have been achieved from funding deed (to date)	6 Scheduled milestones/outputs/activities (current reporting period or carried over from the previous reporting period)	7 Percentage of scheduled milestone / output / activity achieved (current reporting period)	8 Activity Reporting <i>Description of activities during this reporting period</i>	9 Spatial information available for location of on ground works
<p><b>Target 5 Improving land management practices</b></p> <p><i>To increase by 42 000 farmers in identified priority regions that have improved their management to reduce the risk of soil acidification and soil loss through wind erosion, water erosion and improve carbon content of soil, or have adopted other improved soil management methods</i></p>	<p>Survey and documentation of current management practices and requirements of 210 land holders for enhancing behavioural change and adoption of best management practices for grazing, forestry re-afforestation and revegetation to improve water quality</p> <p>210 farmers develop and implement management plans and adopt improved soil management methods</p> <p>200 pastoralists receive incentives to implement on-ground works and adopt improved land management practices surveys prior to, and post, the implementation of property management plans and incentives, quantify the number of land holders adopting improved land and soil management practices</p>	<p><b>46 + 19 under construction</b></p> <p><b>31 receive incentives</b></p> <p><b>3 demo sites completed</b></p> <p><b>474 attend 14 field days and workshops</b></p> <p><b>24 attend advanced training</b></p> <p><b>47 GIS mapped PMP</b></p>	<p><b>46 + 19</b></p>	<p><b>47</b></p> <p><b>30 receive incentives</b></p> <p><b>3 demo sites completed</b></p> <p><b>315 attend 16 field days</b></p> <p><b>30</b></p>	<p><b>Activity (v)</b> Survey of current land and soil management practices of farmers and pastoralists undertaken</p> <p>47 (of 210) farmers implement management plans and incentives to reduce hill slope erosion</p> <p>30 (of 200) pastoralists utilise incentives for on-ground works to improve ground cover</p> <p>3 (of 9) new demonstration sites established</p> <p>315 (of 1260) farmers attend 16 field days and undertake monitoring and evaluation of sites</p> <p>30 (150 of the above 1260) farmers receive advanced training at 2 x 5-day workshops</p> <p>GIS mapped overlays developed by each nrm body to identify at-risk slopes and formulate basis for management plans</p>	<p><b>100%</b></p> <p><b>100%</b></p> <p><b>100%</b></p> <p><b>100%</b></p> <p><b>150%</b></p> <p><b>80%</b></p> <p><b>100%</b></p>	<p>Survey process developed utilising the 'Survey Monkey' program and is being utilised to ascertain current land and soil management practices by landholders to flag those most in need within the criteria of the project. 105 responses have been received showing wide interest in the project and it's objectives</p> <p>46 landholders write and implement management plans</p> <p>31 landholders receive incentives</p> <p>3 demonstration sites completed</p> <p>474 attend 14 workshops and field days</p> <p>24 receive advanced training at 5 day workshops</p> <p>47 GIS mapped Management Plans</p>	<p>Spatial information available for location of on ground works</p>

Private Forestry Southern Queensland has developed a comprehensive landholder survey through the Survey Monkey software programme. The survey is framed to de-construct current management practices, extent and condition of landholder's plantation, regrowth and remnant forest cover, current management inputs, skill set analysis and the preferred systems for capacity building for participating landholders. The survey is the first stage in the identification and documentation of knowledge bridges required to build awareness and capacity between existing behaviours and "best practice" systems. This tool prioritises the areas for which the Re-vegnet.au program is targeting, therefore highlighting those landholders who are prepared to invest in property management changes and on-ground work to achieve the aims of the CfoC program.



Field day location	Topic	Attendance
Captains Creek	Fire management	35
5 property bus trip	General reveg m	71
Gin Gin	Harvest management	15
Beaudesert	Regrowth legislation and management	64
Atherton area x 2	Plantation management	31
Innisfail area x 2	Regrowth management	38
Bororen	Regrowth management	35
Santa Glen, Rockhampton	Fire Management	22
Maryborough	Regional Fire management	66
Buaraba	Regrowth management	36
Emu Creek	Regrowth management	16
Kilcoy	District Fire Management plan	45
<b>Total</b>		<b>474</b>

### Terrain Specific

Under the banner of the Re-vegnet.au project in the Wet Tropics, a strong emphasis has been on the production of ecosystem services for future markets, including carbon sequestration.

### Achievements against milestones:

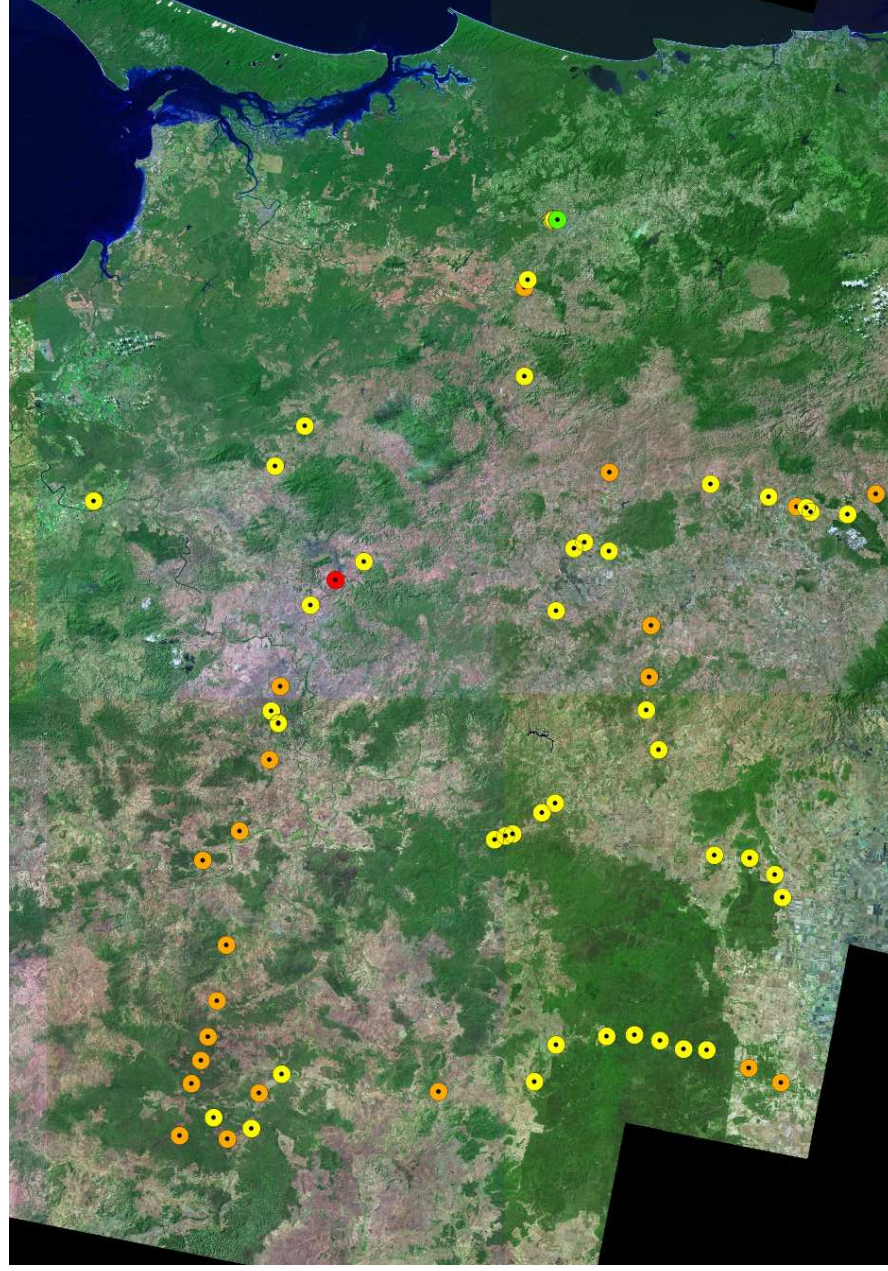
- Priority areas for ecosystem services works have been identified through the historical operations within the Terrain NRM region and have been further refined through the Re-vegnet.au work. This additional prioritization and mapping is now being used to inform project works and target properties.
- Extensive property visits have been conducted with all participating landholders, during which tailored advice and support have been provided, including comprehensive discussions about vegetation and land management issues, and opportunities for improvement.
- All landholders have received advice and information about Best Management Practice in relation to vegetation management, and measures that will effectively minimize soil and sediment loss.
- Silvicultural advice has been provided through a partnership with DEEDI extension staff; two landholders have species composition suitable for large scale silvicultural management
- As mentioned above, a total of 22 landholders are the recipients of comprehensive PMP's and 14 have received devolved grants to support implementation of these plans. All properties involved in the PMP component of the project receive site specific information including, but not limited to, that which has been outlined for the prioritization mapping.

1 Caring for our Country targets	2 Approved objectives / objects as per Head Funding Deed Schedule (include units of measure)	3 Actual quantity achieved (current reporting period)	4 Actual cumulative quantity achieved (to date )	5 Cumulative quantity to have been achieved from funding deed (to date)	6 Scheduled milestones/outputs/activities (current reporting period or carried over from the previous reporting period)	7 Percentage of scheduled milestone / output / activity achieved (current reporting period)	8 Activity Reporting	9 Spatial information available for location of on ground works
<p><b>Target 6</b>  <b>Improving knowledge and skills of land managers – To increase by 42 000 land managers and farmers over four years who have demonstrated an improvement in knowledge and skills in natural resource management</b></p>	<p>9 new demonstration sites in addition to the maintenance, re-measurement and utilisation of 10 already in existence</p> <p>To increase by 1 260 the number of farmers who improve their knowledge and skills in natural resource management by attending workshops and field days and undertaking training and monitoring and evaluation of project sites.</p> <p>64 field days over 4 years</p> <p>10 X 5-day workshops for a total of 150 people (included within the 1260 land managers) in Farm Ready accredited advanced training in forest management, plantation establishment and revegetation practices</p> <p>Development of GIS mapping overlays to identify and mitigate soil erosion risks associated with hill slopes in coastal catchments</p>			<p>3 (of 9) new demonstration sites established</p> <p>315 (of 1260) farmers attend 16 field days and undertake monitoring and evaluation of sites</p> <p>30 (150 of the above 1260) farmers receive advanced training at 2 x 5-day workshops (this course is Farm Ready accredited)</p> <p>GIS mapped overlays developed by each nrm body to identify at-risk slopes and formulate management plans</p>	<p>3 (of 9) new demonstration sites established</p> <p>315 (of 1260) farmers attend 16 field days and undertake monitoring and evaluation of sites</p> <p>30 (150 of the above 1260) farmers receive advanced training at 2 x 5-day workshops</p> <p>GIS mapped overlays developed by each nrm body to identify at-risk slopes and formulate basis for management plans</p>	<p><b>100%</b></p> <p><b>150%</b></p> <p><b>80%</b></p> <p><b>100%</b></p>	<p><b>3 demo sites completed, 10 old sites maintained, remeasured and the data analysed</b></p> <p>474 attend 14 workshops and field days</p> <p>24 receive advanced training at 5 day workshops</p> <p>46 landholders write and implement GIS mapped management plans</p> <p>31 landholders receive incentives to complete on-ground works associated with the developed management Plan</p> <p>GIS overlays developed for sodic and other at risk soils from border to Gladstone</p>	

1 Caring for our Country targets	2 Approved objectives / objects as per Head Funding Deed Schedule (include units of measure)	3 Actual quantity achieved (current reporting period)	4 Actual cumulative quantity achieved (to date )	5 Cumulative quantity to have been achieved from funding deed (to date)	6 Scheduled milestones/outputs/activities (current reporting period or carried over from the previous reporting period)	7 Percentage of scheduled milestone / output / activity achieved (current reporting period)	8 Activity Reporting	9 Spatial information available for location of on ground works
<p><b>Target 7</b>  <b>Improving delivery of best practice</b>  <b>To ensure all regional natural resource management organisations assist local communities, including indigenous, landcare and coastcare groups over the next two years to access knowledge and skills in managing natural resources, including:</b>  - providing easily accessible, free information to groups and individuals, and  - providing training opportunities to local groups</p>	<p>The Project Steering Committee holds four meetings each year</p> <p>Develop "A-D" Rapid assessment system to support "A-D" management systems</p> <p>Compilation and distribution of 1000 copies of a DVD "How to see the wood from the trees"</p> <p>One training course delivered annually for four years to staff of six natural resource management bodies</p> <p>Staff of the six natural resource management bodies delivers capacity building information and training to land managers at workshops and field days</p>	<p>4</p> <p><b>DVD started</b></p> <p>3</p>	<p>4</p> <p>3</p>	<p>4</p> <p>"A - D" management forest condition assessment developed into a system, that is aligned with the MCA for Reef Rescue, to improve broad-scale native vegetation and forest assessment and management</p> <p>DVD 'How to see the wood from the trees' Developed (2 year timeline)</p> <p>One (of 4) training courses delivered to six nrm bodies</p> <p>Staff of six nrm bodies deliver catchment appropriate information and training at field days and workshops - as conducted in Activity</p>		<p>100%</p> <p>100%</p> <p>25%</p> <p>100%</p> <p>100%</p>	<p>Inaugural meeting was held Dec 1 &amp; 2 2009</p> <p>2nd meeting by Teleconference Feb 22 2010</p> <p>3<sup>rd</sup> Meeting by teleconference April 19 2010</p> <p>4<sup>th</sup> meeting was held June 25 2009</p> <p>'A-D' rapid assessment tool ha been fully developed. Constructed within in Arcmap and GPS linked it incorporates 21 drop down weighted and scored assessment criteria considering the full range of forest, health, habitat, ground cover and soil condition attributes. once each criteria assessment has been completed it automatically calculates an assessment score which then puts the forest in an A&lt;B&lt;C or D condition. It then marks the site as a GPS point with a coloured dot representing its condition score. The assessment system builds on the Qld Dept Primary Industries land condition assessment tool.It is designed as a rapid assessment snapshot of forest condition and will be linked to GPS points and photos.</p> <p>Over the life of the project its is planned to undertake an extensive network of assessments points which will give a mapped forest condition status for the project area.</p> <p><b>PFSQ has purchased video recording equipment. Training in the equipment use has been completed and initial filming has started. Currently the script is under review</b></p> <p>BMRG staff training "Out of the Matchbox" regional fire strategies and methodologies (60 participants) (Maryborough)</p> <p>BMRG staff presentation re the C4C project (Bundaberg)  Beaudesert EPA presentation on regrowth legislation  University of Qld – Presentation on C4C  Reef NRM group presentation at Santa Glen Fire Management day  Kilcoy Fire Management Open Day – Rural Fire Brigade SEQC presentation</p>	

	3.5 technical officers employed	.6 FTE SEQC 1.0 FTE CQFA 1.0 FTE Ter NRM .2 FTE DEEDI .7 FTE PFSQ		Three and one half Technical Officers Employed		100%	Terrain presentations at field days re Degree Celsius initiative	
GIS data sets, including information composed of the latest aerial photography, soil, non-remnant vegetation mapping, salinity hotspots, links to current water monitoring programs, will be provided to the six Queensland natural resource management regional bodies and the Australian Government				GIS data sets and all project data shared with landholders, the Indigenous community and six nrm bodies for monitoring and evaluation			GIS data sets completed for highly dispersible soils in particular the high risk sodic and solodic soils and hillslope erosion areas for the east coast and areas west of the great dividing range  All management are provided with aerial photography units and relevant GIS layers including remnant and regrowth mapping, management units infrastructure etc for management plans  Rapid Assessment of A-D Forest health survey will be an ongoing addition to the GIS layer being continuously added to over the life of the project.	

Map 3. Rapid Assessment of Forest Health points as of May 2010 – PFSQ region Green A, Yellow B, Orange C, Red D condition



1 Caring for our Country targets	2 Approved objectives / objects as per Head Funding Deed Schedule (include units of measure)	3 Actual quantity achieved (current reporting period)	4 Actual cumulative quantity achieved (to date )	5 Cumulative quantity to have been achieved from funding deed (to date)	6 Scheduled milestones/outputs/activities (current reporting period or carried over from the previous reporting period)	7 Percentage of scheduled milestone / output / activity achieved (current reporting period)	8 Activity Reporting	9 Spatial information available for location of on ground works
<p><b>Target 8</b>  <b>Engaging Indigenous Communities</b>  <i>Coordination to support Indigenous engagement in natural resource management</i>  <i>On-going forestry industry standard training delivered to contract crews</i></p>	<p>To develop one partnership agreement with Silver Lining Foundation for the engagement of the Indigenous community in project activities..</p> <p>Collaborative arrangements with other Indigenous organisations may be incorporated, where appropriate.</p> <p><b>One partnership is created with the Silver Lining Foundation (Murgon) for ongoing training of contract crews which undertake natural resource management activities of this project. Training will be in accordance with the forestry industry's standards.</b></p>	<p>Partnership agreement with the Silver Lining Foundation completed and signed off,</p> <p>Collaboration and support for 100 000 seedling nursery commenced,</p> <p>██████████ re supplying seedlings for large revegetation project 10 000 seedling order ██████████</p>		<p><b>Coordination to support Indigenous engagement in natural resource management</b></p> <p><b>On-going forestry industry standard training delivered to contract crews</b></p>		<p><b>100%</b></p> <p><b>100%</b></p>	<p>A signed MOU with the Silver Lining Foundation (Murgon based indigenous training and employment corporation) has been negotiated and signed.</p> <p>Silver Lining Foundation has a native seedling nursery funded by Ergon Energy (to establishment stage), built on their holdings at Murgon. They have been without anyone capable of preparing a management strategy and implementation plan for the success of the nursery. PFSQ has worked with the Foundation and the ██████████ - who are eager to use this resource in their environmental plantings required for their site – and as part of the signed MOU, PFSQ is providing support and training for the nursery staff and also training for field crew to implement the environmental work required by ██████████ and aspects of forests management partly funded by the Re-Vegnet.au incentive program.</p> <p>As a commercial contract for the nursery, PFSQ has obtained an order for 10 000 seedlings to be supplied to ██████████</p> <p>Success with this initial contract ha already lead into larger contracts such as the ██████████ for 100 000 seedlings, and a further 100 000 from PFSQ requiring more nursery staff with subsequent training and also further exposure to the commercial world.</p> <p>The Native Forest &amp; Plantation 5 Day Management Workshop was re-developed extensively with a focus on Forest treatment, Forest health assessment, crown health and regeneration for14 Indigenous youth to gain a perspective and skills in the forestry industry. This crew is initially undertaking work on Silver Lining's property and once up in industry standard will commence work on Re-Vegnet.au incentive properties.</p> <p>Ongoing support in this area is paramount and further training of participants and new participants will be encouraged. This training is being augmented</p>	

1 Caring for our Country targets	2 Approved objectives / objects as per Head Funding Deed Schedule (include units of measure)	3 Actual quantity achieved (current reporting period)	4 Actual cumulative quantity achieved (to date )	5 Cumulative quantity to have been achieved from funding deed (to date)	6 Scheduled milestones/outputs/activities (current reporting period or carried over from the previous reporting period)	7 Percentage of scheduled milestone / output / activity achieved (current reporting period)	8 Activity Reporting	9 Spatial information available for location of on ground works
<b>Target 9</b> <b>Using Traditional Ecological Knowledge</b> <i>Traditional ecological knowledge included and delivered in one training program</i>	Incorporate traditional Indigenous ecological knowledge, including fire management practices, in yearly training programs for the Indigenous community in forest health assessment and regeneration for carbon, environmental ecosystem services, productivity, biodiversity and conservation.			Traditional ecological knowledge included and delivered in one training program		<b>100%</b>	Training program developed and delivered to build capacity in Indigenous communities to allow for contractual forestry work experience with ongoing mentoring and support. This has proved very successful and will be continued to be mentored into a proven contractor program.	